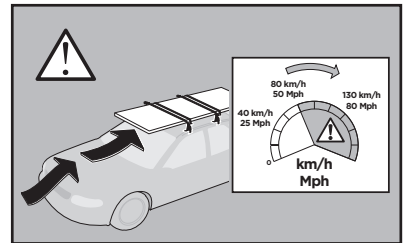
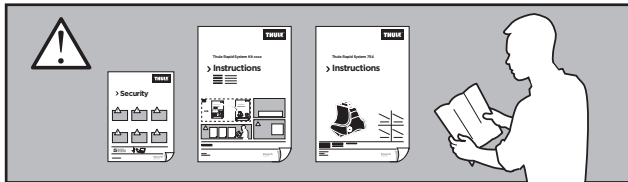
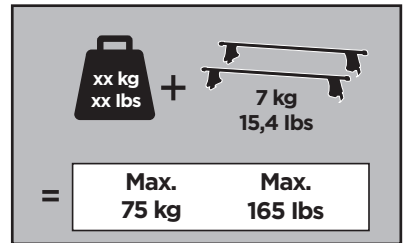
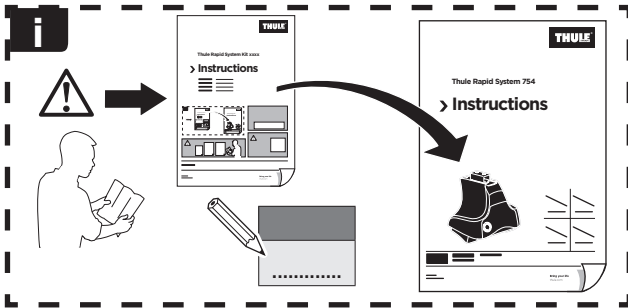


Thule Rapid System Kit 1274

> Instructions

LAND ROVER Range Rover, 5-dr SUV, 02-12 / *03-13

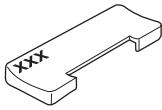
*North America



ISO 11154-E



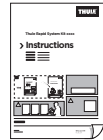
19 x4



271 x4



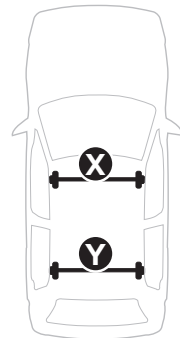
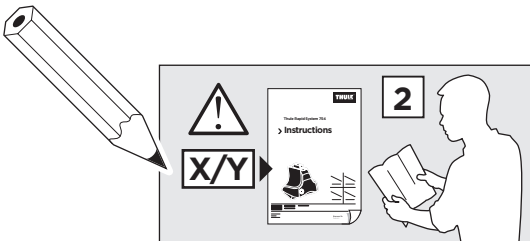
x1



x1

1

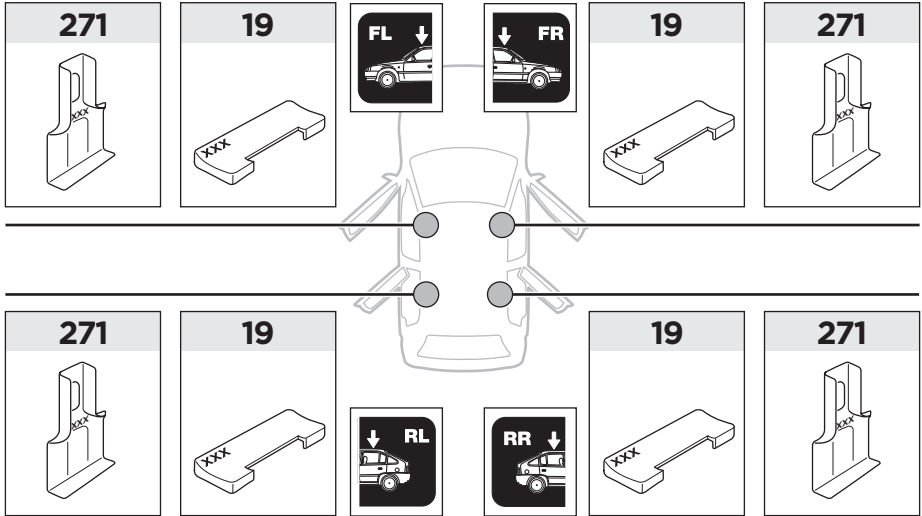
	X (scale)	X (mm)	X (inch)
LAND ROVER Range Rover, 5-dr SUV, 02-12 / *03-13	56	1211	47 ⁵ / ₈

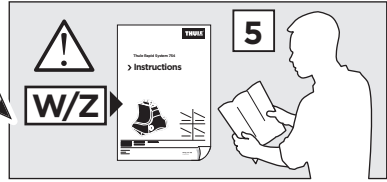


	Y (scale)	Y (mm)	Y (inch)
LAND ROVER Range Rover, 5-dr SUV, 02-12 / *03-13	55,5	1206	47 ¹ / ₂

2

LAND ROVER Range Rover, 5-dr SUV, 02-12 / *03-13



3

	W (mm)	W (inch)
LAND ROVER Range Rover, 5-dr SUV, 02-12 / *03-13	720	28 ³/₈

